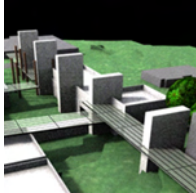


## selected projects



### **City College of San Francisco Wellness Center** San Francisco Senior Project Manager

Prominently sited at the southeast corner of the campus, the 148,000sf Wellness Center contains a performance gym, dance studios, a 25m indoor swimming pool, and support facilities for the championship football team. The first of a series of projects undertaken by a Joint Venture Partnership, the Wellness Center will be LEED certified and has a construction budget of \$47 million. The project is under construction.



### **Ohlone College Student Support Services Building** Fremont California Senior Project Manager

This community college campus was originally designed in the late 1960's on a steeply sloping site overlooking the San Francisco Bay. State bond funding provided the opportunity to create a new "heart" for the campus, which serves an exclusively commuter student population. At \$21 million and more than 76,000sf, the new facility will combine contemporary Bookstore, Cafeteria, Administration, and Student Government functions in a single, sustainably-designed building that elegantly connects the lower and upper portions of the campus and sets the tone for future campus development.



### **School of Business and Management** University of San Francisco Project Manager

Renovation and adaptive reuse, coupled with a striking classroom wing addition will create a suitable home for this internationally-acclaimed academic program. Primary contact between client and project team, guiding the design process to support the School's mission. Construction documents were completed on schedule and within the \$10.3 million budget; the building opened for the Fall 2005 semester.



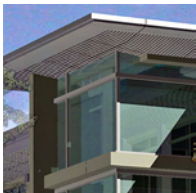
### **Transbay Terminal Intermodal Station** San Francisco Senior Project Manager

The Terminal's innovative and sustainable design and comprehensive array of transit options will be the region's first true multi-modal transportation facility linking the Bay Area by bus and commuter train; and connecting the region to the nation with high-speed rail. Estimated construction cost in June 2000: \$960 million. Responsible for managing a large international team of specialty consultants in association with Richard Rogers Partnership. Coordinated scenario planning and presentations to public agencies during the Strategic Planning Phase. The project is in environmental review.



### **Union City Intermodal Station** Union City California Designer

Part of a comprehensive master plan for transit-oriented development, the proposed \$13.5 million intermodal station will unify bus, BART access, commuter parking, taxi service and kiss-n-ride facilities. The preferred conceptual design features an urban park populated with tensile fabric structures that are supported by sculptural elements that integrate site lighting and signage.



### **State Compensation Insurance Fund Building** Redding California Technical Architect

The State Compensation Insurance Fund is a self-supporting, non-profit enterprise that provides workers' compensation insurance to California employers at cost with no financial obligation to the public. The new 75,000sf, 3-story branch office has a \$16 million budget. Implementing a fast-track process with multiple permits, the building is currently under construction.



### **Pier 70, Center for Arts & Industry San Francisco**

Project Manager

In response to a developer RFP issued by the San Francisco Port Commission, this conceptual proposal blends public shoreline access, historic preservation and interpretation, maritime industry, and creative expression. The proposal would provide destination cultural facilities as well as public amenities to the historically underserved neighborhood of Dogpatch



### **Columbia Park Boys & Girls Club San Francisco**

Project Manager / Project Architect

Located in the Mission neighborhood of San Francisco, the 34,000sf flagship of the national Boys and Girls Club system was originally built in 1955, and had seen little physical modification in 40 years. The \$2 million renovation included completely reconfiguring existing spaces to accommodate the addition of girls to the membership, the increasing impact of technology on nearly all the programs, and the requirements of current building and accessibility codes.



### **Sony Computer Entertainment Foster City California**

Project Manager / Project Architect

To inspire their young staff of game developers, the directors of the US headquarters for the PlayStation video game console dreamed of a loft building. The desired aesthetic was achieved within a traditional suburban office building by selectively exposing the ceiling structure and employing industrial finishes. Given the Start-up nature of the division in 1995, the build-out of the tenant areas required ongoing programming and phased development in response to the demands of this dynamic industry.



### **Altera Corporate Headquarters Campus Expansion San Jose California**

Project Manager / Project Architect

This 25-acre corporate headquarters campus in north San Jose was designed in 1995 for a world leader in the design and manufacture of programmable chips and development tools. Four buildings totaling 508,000 square feet housed research, engineering, prototyping and administrative facilities at an FAR of .35. In 2001, higher densities were negotiated on the "maxed out" site by demonstrating and documenting the effects of the proposed expansion in light of flood control improvements, recent development of adjacent properties, and Altera's "good citizen" efforts. The result was agency approvals for a new 4 story, 143,000sf office building, a 4 story parking structure for 740 vehicles and a .60 FAR. The addition continues the forms and materials palette of the original campus and creates a strong presence on busy North First Street.



### **Watergate Towers Highrise Renovation Emeryville California**

Project Manager / Project Architect

The project was a phased renovation of three high-rise towers to accommodate modern building and accessibility code requirements. Originally built in three different decades, the three towers were unified stylistically through the consistent use of fine finish materials. Existing limestone finishes are complemented by warm anigre veneers and limestone floor tiles set in a timeless patterns. The ceilings are deliberately simple to keep the focus on the rich floor and wall finishes.

### **Palo Alto Medical Foundation Palo Alto California**

Job Captain

This new \$135 million campus for a private HMO is comprised of three buildings containing clinic and research facilities over two levels of underground parking. Responsible for the coordination of in-house team and consultants' work on the site and the underground parking structure. Construction was completed in 2000.

### **George Rice and Sons Brisbane California**

Project Manager / Project Architect

Creative adaptive reuse transformed a cannery and warehouse into a state-of-the-art plant for a national high-quality printer. This \$24 million renovation included administration facilities, conventional and digital pre-press areas, as well as a hotel-like suite for customers who must be available to approve overnight proofs. The production floor accommodates 5 presses; Just-in-Time delivery and a clear product path maximized the building resources.

## **contact**

e [judy@judyvansoldt.com](mailto:judy@judyvansoldt.com) m 415.505.4683 402 30<sup>th</sup> Street San Francisco California 94131

## resume

### Employment History

2003-	Architect Consultant	<b>Self-employed</b> San Francisco	
2002-2003	Senior Project Manager Associate	<b>Kaplan McLaughlin Diaz</b> San Francisco	<a href="http://www.kmd-arch.com">www.kmd-arch.com</a>
2000-2002	Senior Project Manager	<b>SMWM Architecture Planning Interiors Graphic Design</b> San Francisco	<a href="http://www.smwm.com">www.smwm.com</a>
1997-2000	Project Manager	<b>RMW Architecture + Design</b> San Francisco	<a href="http://www.rmw.com">www.rmw.com</a>
1992-1996	Project Manager	<b>DES Architects &amp; Engineers</b> Redwood City, California	<a href="http://www.des-ae.com">www.des-ae.com</a>
1990-1991	Project Architect	<b>Kenneth Rodrigues and Partners</b> San Jose, California	<a href="http://www.krparchitects.com">www.krparchitects.com</a>
1989	Designer	<b>Geoffrey Reid and Associates</b> London	<a href="http://www.reidarchitecture.com">www.reidarchitecture.com</a>
1988	Job Captain	<b>INBO Architektenburo</b> Woudenberg, The Netherlands	<a href="http://www.inbo.com">www.inbo.com</a>
1986-1988	Drafter	<b>Beman &amp; Shultz Architects</b> San Jose, California	

### Education

Bachelor of Architecture	<b>California Polytechnic State University</b> San Luis Obispo	<a href="http://www.calpoly.edu">www.calpoly.edu</a>
Graduate Studies in:	<b>Advanced Management Institute</b> San Francisco	<a href="http://www.advancedmgmtinstitute.com">www.advancedmgmtinstitute.com</a>
- Project Management		
- Practice Management		
- Leadership		

### Presentations / Publications

- *Melbourne in the New Millennium* – presentation to the San Francisco Planning and Urban Research Association, January 2004
- *Learning from Vancouver* – joint presentation to the San Francisco Planning and Urban Research Association, August 2003
- *Transbay Terminal Improvement Plan* – article in the San Francisco Planning and Urban Research Association Newsletter, January 2002
- *The Transbay Terminal & the Future of Urban Transportation Stations: a Checklist* – coauthor of white paper presented to National Transportation Secretary Norm Mineta through the Women's Transportation Seminar, October 2001
- *The Transbay Terminal: Connecting the Bay Area* – presentation to the American Planning Association Northern Section, California Chapter, August 2001
- *Transbay Terminal Update* – presentation to the BART Board of Directors, June 2001

### Notes

- California License C22858
- LEED Accredited Professional
- Member, American Institute of Architects, San Francisco Chapter
- Member, San Francisco Planning & Urban Research Association (SPUR)
- Guest juror, graduate architecture design studio, Academy of Art, San Francisco 2003
- Design / presentation software: SketchUp, PhotoShop, PowerPoint
- Management software: Word, Excel, MS Project, SureTrak, AutoCAD 2000, PageMaker
- Bilingual English/Dutch
- Hold European Union passport